

AUSTRALIAN WORKERS HERITAGE CENTRE

A cultural and heritage styled interpretive centre honouring our Nation's workers.



*Australian
Workers Heritage
Centre*

BARCALDINE - QUEENSLAND



NG FOR HEALTH

A TRIBUTE TO THE WORKING MEN AND WOMEN OF AUSTRALIA

*a seamless connection between the past,
the present & the future*

PLAN YOUR VISIT

The **Australian Workers Heritage Centre** is a museum styled tourist attraction celebrating working history.

Established in 1991, the Centre proudly takes its place as a major draw card on the Matilda Way tourist drive as a National Monument to our working men and women.

Set on over five acres with a wide range of exhibitions, the Australian Workers Heritage Centre offers plenty to see and do - so be sure to allow enough time in your itinerary to fully explore and enjoy the experience.

LOCATION - OUTBACK QUEENSLAND

Barcaldine - 127 Oak Street

P: 07 4651 1949

E: info@australianworkersheritagecentre.com.au

W: australianworkersheritagecentre.com.au

HOURS & ADMISSION

Please visit our website for up-to-date trading hours and admission fees
Scan the QR Code or Visit
australianworkersheritagecentre.com.au

*Bus/Group bookings 10+, please enquire.
{Catering can be organised for tour groups by prior arrangement}*

Scan to visit
our website



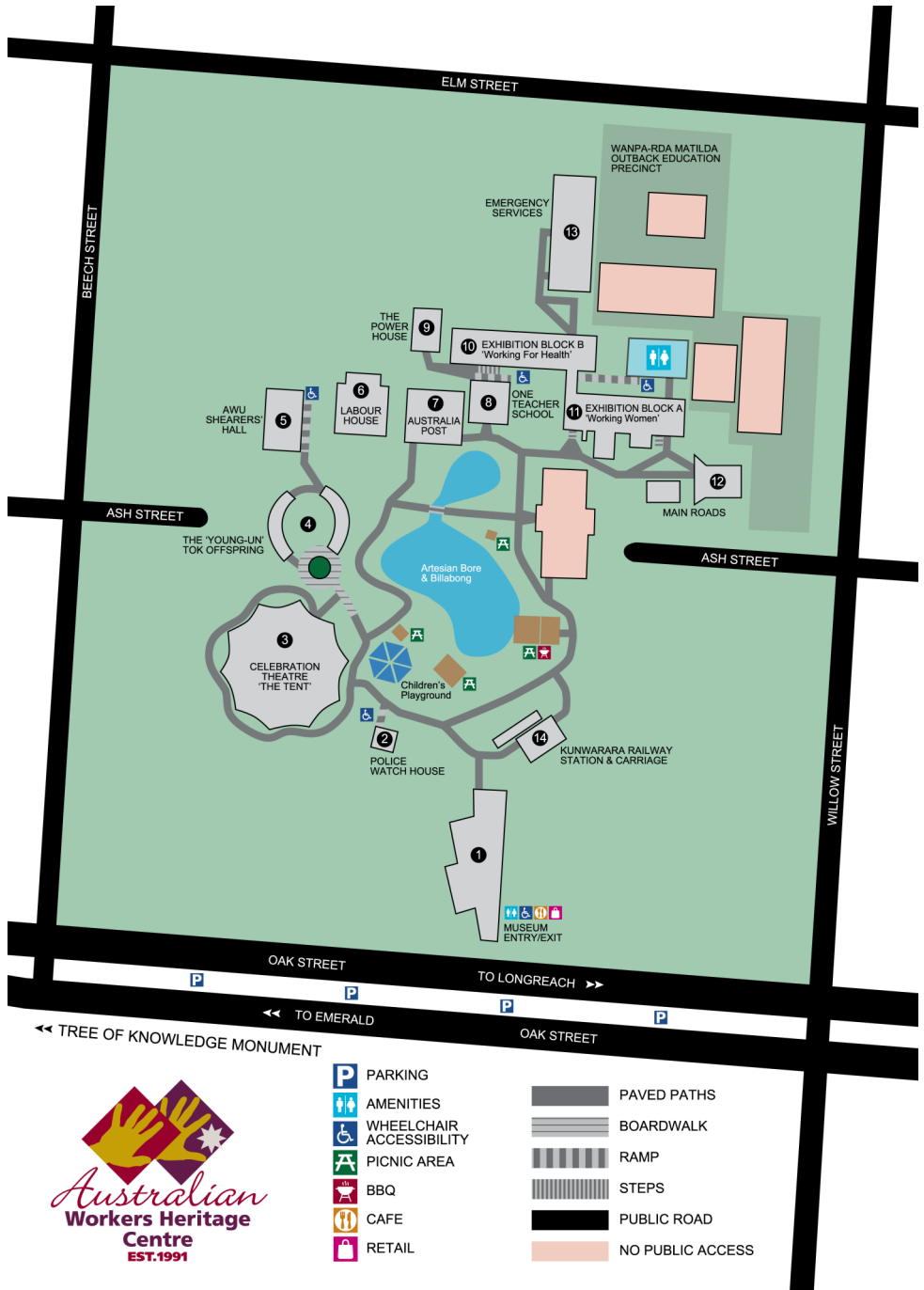
FAMILY FRIENDLY FACILITIES DESIGNED TO COMPLEMENT AND ENHANCE THE VISTOR EXPERIENCE

- Multi-purpose entrance building with landscaped surrounds & walkway to museum exhibitions/displays & grounds
- Accessible Facilities Available
- Public Amenities
- Landscaped Gardens
- Bore Fed Billabong
- Shaded Children's Playground
- Undercover BBQ Areas
- Outback Emporium - Your retail stop for stories, style & souvenirs
- Café 1891
- Dog Friendly



Kunwarara Railway Station & Carriage

A CENTRE FOR ALL AUSTRALIANS



- | | | | |
|--|--------------------------|--|------------------|
| | PARKING | | PAVED PATHS |
| | AMENITIES | | BOARDWALK |
| | WHEELCHAIR ACCESSIBILITY | | RAMP |
| | PICNIC AREA | | STEPS |
| | BBQ | | PUBLIC ROAD |
| | CAFE | | NO PUBLIC ACCESS |
| | RETAIL | | |

1. MUSEUM ENTRY / EXIT

Multi purpose entrance building with Outback Emporium and Café 1891, featuring landscaped surrounds & a walkway to the museum's exhibitions / displays, billabong & grounds.

2. POLICE WATCH HOUSE

Honouring the work of police across the country, the Watch House was relocated from Toogoolawah, and tells the story of the struggles of the constabularies to protect lives and properties in a harsh and hostile environment.

3. CELEBRATION THEATRE - 'THE TENT'

Originally part of Australia's Bicentennial Celebrations, the Celebration Theatre houses several exhibits of interest including a court house scene, a recreated isolation cell from St Helena Prison, a photographic exhibition of the Shearers' War from the strike of 1891, and the Bicentennial exhibition.

4. THE 'YOUNG-UN' (TOK OFFSPRING)

The 'Young-Un' is a direct descendant of the Tree of Knowledge, planted on site on May 2nd, 2005. The 'Young-Un' exhibition trail takes the visitor on a journey of discovery on how the events which occurred during the 1891 Shearers' Strike have had dramatic impact on the lives of Australians ever since and earned Barcaldine it's place in history.

5. AWU SHEARERS' HALL

Australia's oldest union office and hall. The "Shearers' Hall" was generously donated and re-located from Longreach to our site by the Australian Workers' Union. The hall has been refurbished and transformed into a quality exhibition space presenting and interpreting a highly valued and unique chapter of our working history.

6. LABOUR HOUSE

The display comprises a collection of photographic and textual information about the history of labour in politics.

A display of cartoons from the newspaper "The Worker" 1893 - 1930. The 'Workers' Wall' is a photographic display of Labour Representatives - State and Federal.

7. AUSTRALIA POST

This comprehensive display depicting an historic Post Office is dedicated to all postal workers. The display also includes a miniature replica of a Cobb and Co coach.

8. ONE TEACHER SCHOOL

This historic one teacher school from Torrens Creek is typical of rural schools in the early 1900's.

9. THE POWER HOUSE

Power to the nation - thanks to the power workers - from the men and women who built the Snowy Mountains Scheme to the story of the husband and wife team who ran this diesel generator - to the scientists working on the power of the future.

10. EXHIBITION BLOCK B

QLD HEALTH/AMBULANCE DISPLAY WITH ADJOINING STUDENT EDUCATION ROOM

"Working for Health" - is a comprehensive display/exhibition celebrating the outstanding contributions made by our wide ranging talented and committed health workers.

Other exhibits in Block B include a re-creation of Queensland's Legislative Assembly, Public Works and Queensland Electoral Commission displays.

11. EXHIBITION BLOCK A - WORKING WOMEN

The first stage of this major project, "Women in Australia's Working History", is the fascinating exhibition - **"A Lot on Her Hands"** - curated by the Queensland Museum. Celebrating the lives of the working women of Australia, the exhibition reveals the extraordinary stories of some famous and not-so-famous Australian women through photographs, objects and audiovisual materials.

12. MAIN ROADS

A celebration of the workers who built the vast network of roads throughout our nation, overcoming extreme isolation and connecting our communities.

13. EMERGENCY SERVICES

This section recognises the work of emergency workers - see the fire trucks and QAS Ambulance from earlier times. Learn about the expertise and community spirit shown everyday by over 85,000 committed volunteers serving communities right across Queensland; which is a mirror of the dedicated work carried out by volunteer Emergency Service personnel throughout our nation.

14. KUNWARARA RAILWAY STATION & CARRIAGE

The refurbished Kunwarara Railway Station was built in 1915 and relocated here in 1994; comprises the original station, platform, loading crane and a workers' campervan carriage from that era. The exhibition tells the story of Australian railway workers and passengers.

WANPA-RDA MATILDA

The Workers Heritage Centre's own unique Outback Education Centre established in 1997, provides a wonderful residential learning facility for school groups from around Queensland and interstate. **For Information Contact our Operations Manager - Debbie Gleeson - E: Debbie-AWHC@westnet.com.au**



THE 'YOUNG-UN' AN ENDURING LEGACY- STANDING STRONG & PROUD

*embark on a journey of discovery into the
1891 Great Shearers' Strike*

'YOUNG UN' OUTDOOR EXPERIENCE

Australia's most famous tree, the **Tree of Knowledge**, lives on through the **'Young-Un'** at the Australian Workers Heritage Centre.

A direct descendant of Barcaldine's heritage-listed Tree of Knowledge, the 'Young-Un' is linked to the **1891 Shearers' Strike** – the spiritual birthplace of the Australian Labor Party and the Trade Union Movement.

FROM THE BUSH TO THE BALLOT BOX

The 1891 Shearers' Strike was a turning point in Australia's history, as bush workers who once fought for fair pay and conditions carried their struggle from the strike camps into the political arena, laying the foundations of the Australian Labor Party and giving working people a powerful voice in parliament.

WRITERS AND DREAMERS (ACTIVISTS)

This era gave rise to writers and activists of the time like Henry Lawson and Dame Mary Gilmore. They captured the spirit of the struggle in stories, songs and poems immortalising the voices of working people and gave expression to the hardships, hopes and ideals of a movement that sought dignity, fairness and a better future.

THE STORY OF THE 'YOUNG UN'

In 1990, scientists were called upon to ensure the Tree of Knowledge was in good health in time for the Centenary Celebrations of the Great Shearers Strike of 1891.

The following year, a root sucker - a natural clone, was taken off the Tree of Knowledge. It survived and became affectionately known as the 'Young-Un'. The offspring was planted at the AWHC on May 2nd, 2005 as a living symbol of Australia's working heritage.

The 'Young-Un' represents renewal - a silent witness to past struggles and a reminder of the challenges and hopes we share, both now and into the future, with a deep respect for the story it enshrines.

A JOURNEY THROUGH HISTORY

The **'Young-Un' Precinct** is an outdoor exhibition trail designed for reflection and storytelling. It connects seamlessly with the AWU **Shearers' Hall**, guiding visitors from the story of the jailed shearers and the strike, to the formation of the Labor Party and Australia's unique system of industrial arbitration.

This integrated journey brings history to life, weaving powerful stories that create a lasting visitor experience.



One Teacher School

AN EXTRA ORDINARY SALUTE TO AUSTRALIAN WORKERS

The Australian Workers Heritage Centre plays a key role in defining our national character, capturing the spirit of our nation's workers and tells of their courage and determination.

Located on the grounds of the former Barcaldine State School, where many of the original structures have been reinvented into exhibition space and in doing so, the architectural style of the era has been preserved and used in a functional way. The AWU Shearers Hall, Kunwarara Railway Station, One Teacher School, Toogoolawah Police Watch house and the Bicentennial Theatre have been relocated to the Centre, and these buildings are an integral part of the story being told within.

Take the journey through exhibition spaces and historic workplaces of yesteryear, where the stories of Australia's working history and everyday Australians come to life.

BARCALDINE - A PLACE IN HISTORY

Barcaldine's place in Australia's political, industrial and social history, as home of the 1891 Shearers' Strike and Australia's first May Day Parade in 1891, make it both a fitting and symbolic location for a Centre to celebrate workers.



A PLACE OF REFLECTION

Our mission is to honour all workers - past, present and future and help preserve a vitally important part of Australian heritage and culture - 'Our Working Life'.

We hope you will have the opportunity to visit the Australian Workers Heritage Centre and we are confident that you will enjoy the experience.

Please consider joining our community of generous donors who help us reach further by becoming a supporter of the AWHC.

The Australian Workers Heritage Centre does not receive any recurrent operational funding support from any level of Government.

Your support for outback tourism is greatly valued and we thank you most sincerely for your interest in our region and our nation's working history.

Donate now or find out more

**[australianworkersheritagecentre.com.au/
support-us](https://australianworkersheritagecentre.com.au/support-us)**





An Oasis In The Outback

MUSEUM | RETAIL | CAFE

127 Oak Street, Barcaldine, Qld, 4725
07 4651 1949

info@australianworkersheritagecentre.com.au
australianworkersheritagecentre.com.au

